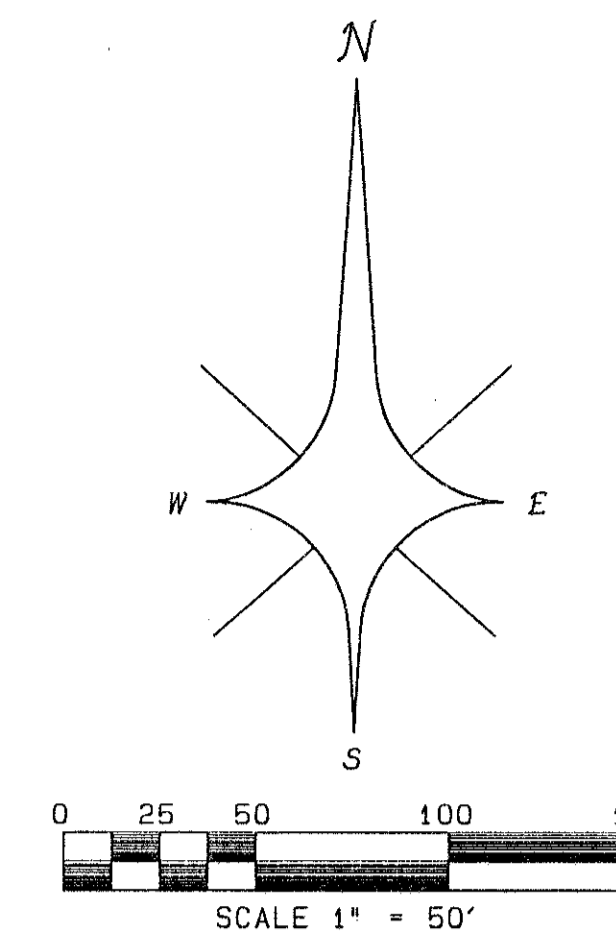
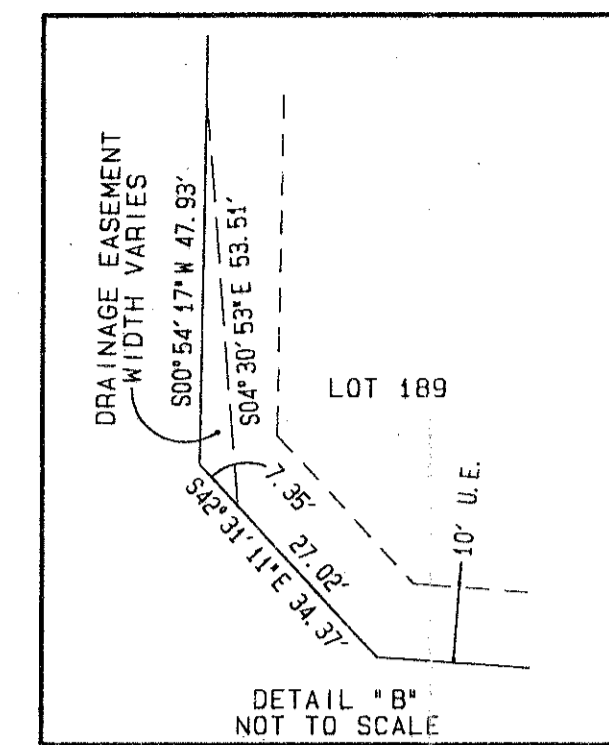


LAKERIDGE FALLS

SITUATE AT PIPER'S GLEN P.U.D. - A PORTION OF POD #6, AND POD #11
 FLORIDA, ALSO BEING A REPLAT OF A PORTION OF TRACTS 25, 26, 27, 28, 29, 30, 31,
 34, 35, 36, 37, 38, 39, 40, 57, 58, 59, 60, 61, 62 AND 63, BLOCK 64 OF THE P.M.
 BEACH FARMS COMPANY PLAT NO. 3, AS RECORDED IN PLAT BOOK 2 PAGES 45 THROUGH 54,
 INCLUSIVE AND A PORTION OF THAT RIGHT OF WAY ABANDONED ACCORDING TO OFFICIAL
 RECORD BOOK 3566, PAGE 1727, OF THE PUBLIC RECORDS OF PALM BEACH COUNTY, FLORIDA

SHEET 7 OF 7 MARCH 1996

108



STATE OF FLORIDA } SS
 COUNTY OF PALM BEACH }
 THIS PLAT WAS FILED FOR
 RECORD AT _____ DAY OF _____
 1996 AND
 ONLY RECORDED IN PLAT BOOK _____
 ON PAGES _____ AND _____
 DOROTHY H. WILKEN, CLERK
 CIRCUIT COURT
 BY: _____ DC

LAKERIDGE GREENS
 PLAT BOOK 74, PAGE 178

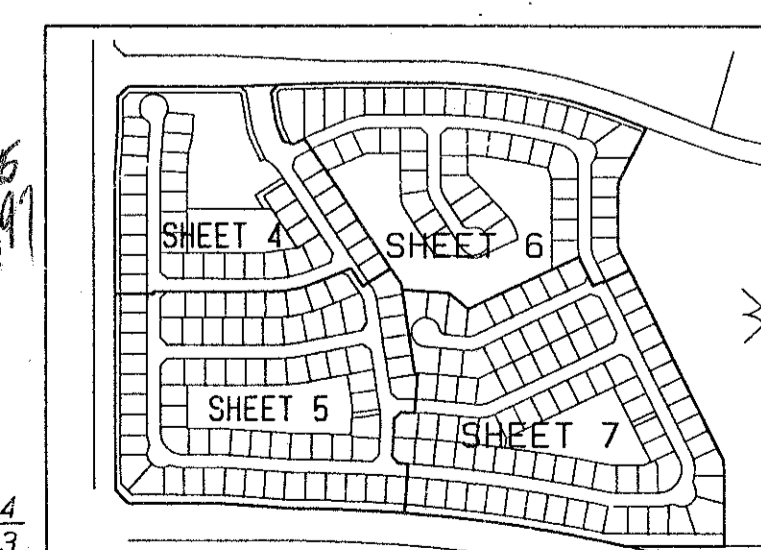
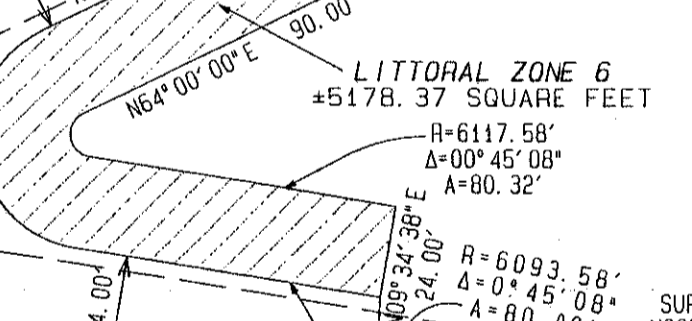
0298-019

TRACT "Q"

COORDINATES SHOWN HEREON ARE GRID COORDINATES
 DATUM = 1983 NORTH AMERICAN DATUM (1990 ADJUSTMENT)
 ZONE = FLORIDA EAST ZONE
 LINEAR UNIT = U.S. SURVEY FOOT
 COORDINATE SYSTEM = 1983 STATE PLANE TRANSVERSE MERCATOR PROJECTION
 ALL DISTANCES ARE GROUND DISTANCES UNLESS OTHERWISE NOTED
 SCALE FACTOR = 1.0000285
 GRID DISTANCE = (GROUND DISTANCE) x (SCALE FACTOR)
 BEARING ROTATION (PLAT TO GRID) = 00°24'12" COUNTER CLOCKWISE
 EXAMPLE: N03°01'52"E (PLAT BEARING) = N02°37'40"E (GRID BEARING)

- CH = CHORD
- D.B. = DEED BOOK
- D.E. = DRAINAGE EASEMENT
- F.P. & L. = FLORIDA POWER AND LIGHT COMPANY
- L. = LOT LENGTH
- L.A.E. = LIMITED ACCESS EASEMENT
- L.M.E. = LAKE MAINTENANCE EASEMENT
- L.W.D.D. = LAKE WORTH DRAINAGE DISTRICT
- N.R. = NON-RADIAL
- N.T.S. = NOT TO SCALE
- O.R.B. = OFFICIAL RECORDS BOOK
- P.B. = PLAT BOOK
- P.G. = PAGE
- P.O.B. = POINT OF BEGINNING
- P.O.C. = POINT OF COMMENCEMENT
- R. = RADIUS (RADI)
- R.F. = RADIAL TO FRONT LOT LINE
- R.R. = RADIAL TO REAR LOT LINE
- R/W = RIGHT OF WAY
- U.E. = UTILITY EASEMENT
- W.C. = WITNESS CORNER
- ⊙ = PERMANENT CONTROL POINT (PCP)
- PCP #4380
- = PERMANENT REFERENCE MONUMENT (PRM)
- PRM #4380
- = CENTERLINE
- L.M.A.E. = LAKE MAINTENANCE ACCESS EASEMENT

TRACT "F"
 WATER MANAGEMENT TRACT TO BE MAINTAINED BY WESTCHESTER COMMUNITY MASTER ASSOCIATION, INC.



ATLANTIC - CARIBBEAN MAPPING, INC.
 3066 W. JOG ROAD - GREENACRES, FLORIDA 33467
 (407) 964-7884; FAX (407) 964-1969

BOOK 77
 FLOOD ZONE B
 QUAD 51
 SE 80-212
 PUD NAME PIPER'S GLEN P.D. 9-1
 PAGE 108
 FLOOD MAP #200A
 ZONING RT
 ZIP CODE 33446

